

*If you've been dreaming of
your own log home. . .*

*then it's time to talk to
Contemporary Log Homes. . .*



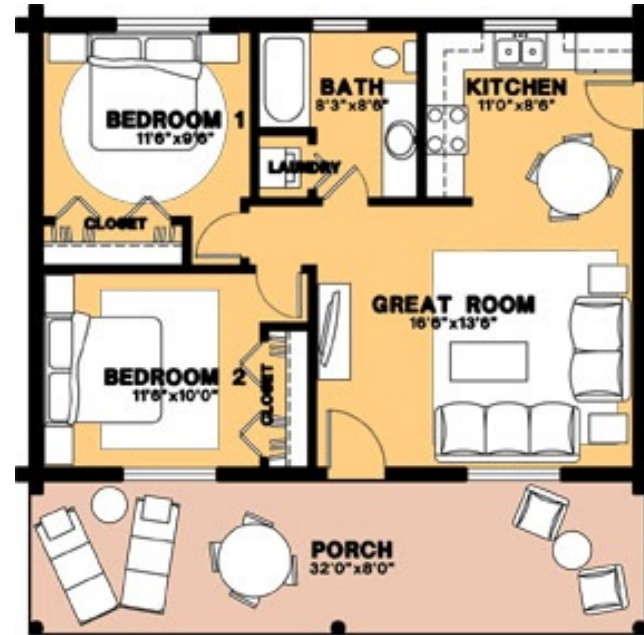
Contemporary
LOG
HOMES, llc
We Deliver Dreams!

Contemporary Log Homes

THE CLEARCREEK - 768 sq. ft.



The Clearcreek is another one of our smaller units that features 2 bedrooms for the small or vacationing family. Storage area is limited but there is enough space for an optional fireplace in the living room. The entire roof is made of trusses with scissor trusses in the living room.



THE CLEARCREEK MODEL FLOOR PLAN

TOTAL LIVABLE 768 SQ.FT.
PORCHS 256 SQ.FT.

The Clearcreek - 768 sq. ft.
Material Package Price: \$34,500.00

STANDARD MATERIAL PACKAGE INCLUDES:

- SILL PLATE: 2x8 pressure treated or redwood plate.
- FLOOR SYSTEM: 2x floor joists with 3/4" T&G OSB or plywood sheathing & girder beams.
- PORCH FLOORS: 2x floor joists with 2x6 decking.
- LOG WALLS: 7" dia. Swedish cope, lodge pole pine and douglas fir mix.
- INTERIOR PARTITIONS: 2x4 or 2x6 studs @ 24" o.c.
- STAIRS: 2x12 stringers and treads.
- LOG GUARDRAILS: 2" dia. pickets @ 5" o.c. with 4" dia. rail on stairways & 2nd floor balconies
- ROOF SYSTEM: 2x roof rafters with 1/2" OSB roof sheathing (or 5/8" OSB where required by code).
- PORCH ROOF SYSTEM: 2x roof rafters with 1/2" OSB roof sheathing (or 5/8" OSB where required by code).
- FASCIA: 2x S1S2E spruce or pine with 1x4 shingle molding.
- ROOFING: 30 yr. Architectural fiberglass shingles over 15 lb. roofing felt.
- BASIC BUILDING HARDWARE: Joist hangers, hurricane ties, roof straps, log wall bolts & construction adhesive between each course of logs.
- CONSTRUCTION MANUAL: A simple step by step "how-to" guide.
- BLUEPRINTS: Five complete sets of permit ready plans prepared by registered architects.

- LOG FINISH MATERIALS: "Sashco" products: Log Jam chinking for interior & exterior joints/seams. Capture exterior stain and Cascade exterior clear coat. Symphony (2 coats) interior clear coat finish.
- TECHNICAL ASSISTANCE: A Contemporary Log Home representative will assist the construction crew at the construction site in starting log walls from the first floor.
- FREIGHT: Included to the construction site if the materials are paid for prior to shipping in the AZ, CO, UT areas. Additional freight costs will apply for all other areas.

MANY POPULAR OPTIONS ARE AVAILABLE:

- | | |
|---------------------------------|--|
| 6x8 D-shaped logs | Pre-fitted Natural Hand Hewn Logs |
| 8", 9", 10" & 12" diameter logs | Hand Peeled Machine Logs |
| Metal Roofing | Log Stairs |
| Window Packages | Door Packages |
| Heavy Timber Structures | Custom Design by Registered Architects |

Thanks for taking the time to consider us as part of your dream. Call one of our representatives today or anytime. We don't have a clock when it comes to customer service!



Western Region
 4542 East McKellips Road
 Suite 101
 Mesa, AZ 85215
 (480) 894-1715

Eastern Region
 25950 Hayden Lane
 Edinboro, PA 16412
 (814) 734-8716

Visit us on the web at www.chllc.com
 Email: deliverdreams@chllc.com

Believe!



Contemporary
KG
HOMES,
llc
We Deliver Dreams!
