

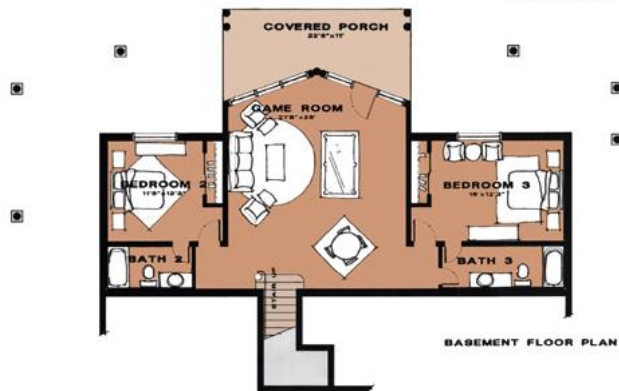
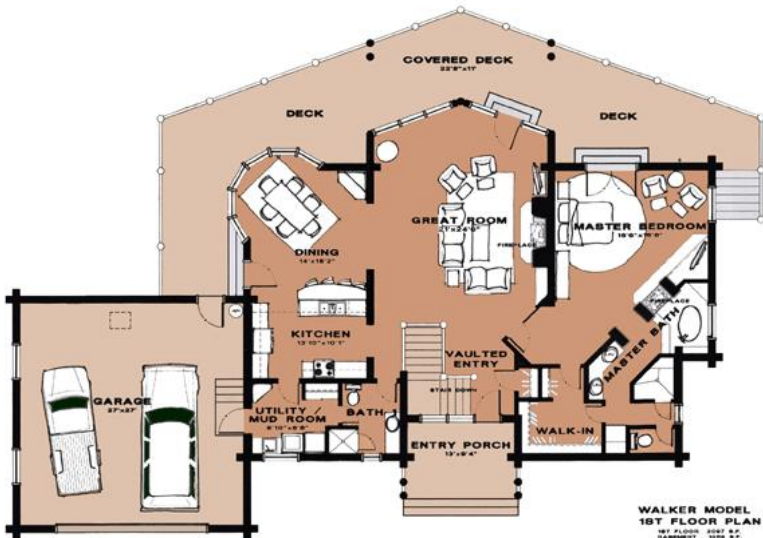
*If you've been dreaming of  
your own log home. . .*

*then it's time to talk to  
Contemporary Log Homes. . .*



*Contemporary*  
**LOG**  
**HOMES,** llc  
*We Deliver Dreams!*

## THE WALKER - 3,356 sq. ft.



Our Walker model blends the rustic warmth of log construction with an extremely functional and attractive floor plan. The main level offers a master bedroom suite, large kitchen and dining room combination and a massive great room. And for that special touch, note the bay window that offers a warm, old-fashioned touch to this traditional design. The basement level contains two additional bedrooms, each with it's own full bath.

A spacious game room completes this functional and unique open-basement plan

**The Walker - 3,356 sq. ft.**  
**Material Package Price: \$103,700.00**

**STANDARD MATERIAL PACKAGE INCLUDES:**

SILL PLATE:	2x8 pressure treated or redwood plate.
FLOOR SYSTEM:	2x floor joists with 3/4" T&G OSB or plywood sheathing & girder beams.
PORCH FLOORS:	2x floor joists with 2x6 decking.
LOG WALLS:	7" dia. Swedish cope, lodge pole pine and douglas fir mix.
INTERIOR PARTITIONS:	2x4 or 2x6 studs @ 24" o.c.
STAIRS:	2x12 stringers and treads.
LOG GUARDRAILS:	2" dia. pickets @ 5" o.c. with 4" dia. rail on stairways & 2nd floor balconies
ROOF SYSTEM:	2x roof rafters with 1/2" OSB roof sheathing (or 5/8" OSB where required by code).
PORCH ROOF SYSTEM:	2x roof rafters with 1/2" OSB roof sheathing (or 5/8" OSB where required by code).
FASCIA:	2x S1S2E spruce or pine with 1x4 shingle molding.
ROOFING:	30 yr. Architectural fiberglass shingles over 15 lb. roofing felt.
BASIC BUILDING HARDWARE:	Joist hangers, hurricane ties, roof straps, log wall bolts & construction adhesive between each course of logs.
CONSTRUCTION MANUAL:	A simple step by step "how-to" guide.
BLUEPRINTS:	Five complete sets of permit ready plans prepared by registered architects.

LOG FINISH MATERIALS:	"Sashco" products: Log Jam chinking for interior & exterior joints/seams. Capture exterior stain and Cascade exterior clear coat. Symphony (2 coats) interior clear coat finish.
TECHNICAL ASSISTANCE:	A Contemporary Log Home representative will assist the construction crew at the construction site in starting log walls from the first floor.
FREIGHT:	Included to the construction site if the materials are paid for prior to shipping in the AZ, CO, UT areas. Additional freight costs will apply for all other areas.

MANY POPULAR OPTIONS ARE AVAILABLE:

6x8 D-shaped logs	Pre-fitted Natural Hand Hewn Logs
8", 9", 10" & 12" diameter logs	Hand Peeled Machine Logs
Metal Roofing	Log Stairs
Window Packages	Door Packages
Heavy Timber Structures	Custom Design by Registered Architects

Thanks for taking the time to consider us as part of your dream. Call one of our representatives today or anytime. We don't have a clock when it comes to customer service!



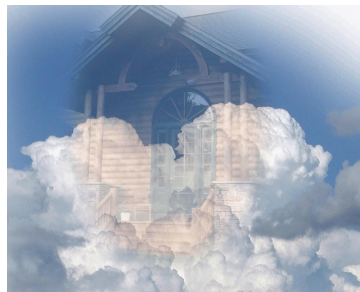
**Western Region**  
 2023 East University Drive  
 Suite 2  
 Tempe, AZ 85281  
 (480) 894-1715

**Eastern Region**  
 1060 Old Plank Road  
 Waterford, PA 16441  
 (814)796-6883

Visit us on the web at [www.chllc.com](http://www.chllc.com)  
 Email: [deliverdreams@chllc.com](mailto:deliverdreams@chllc.com)

---

*Believe!*



*Contemporary*  
**KG**  
**HOMES,**  
llc  
*We Deliver Dreams!*

---