

*If you've been dreaming of
your own log home. . .*

*then it's time to talk to
Contemporary Log Homes. . .*



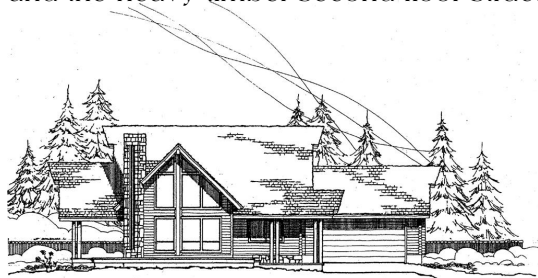
Contemporary
LOG
HOMES, llc
We Deliver Dreams!

THE TIMBERS - 2,342 sq. ft.

Serving as our Western region model home, The Timbers is designed with an emphasis on elegant vacation living. This model has a casual atmosphere throughout with finishes and architectural detailing that excite the visual palate.



A rustic feel matures from the copper tension rod in the timber arch at the Entry Porch to the home's vaulted wood ceilings and the heavy timber second floor structure.



The large Covered Porch with its log posts and heavy timber butterfly arch is a fabulous place for both entertaining and outside dining. The Rear Porch, off the Kitchen, is a intimate place for morning coffee and breakfast for two. The two

Guest Bedrooms downstairs were strategically arranged for privacy and accessibility to the Guest Bath, Laundry and Garage.

Ascending the stairway reveals a comfortable refined elegance you experience with the view of the Living Room and the copper and stone main fireplace.



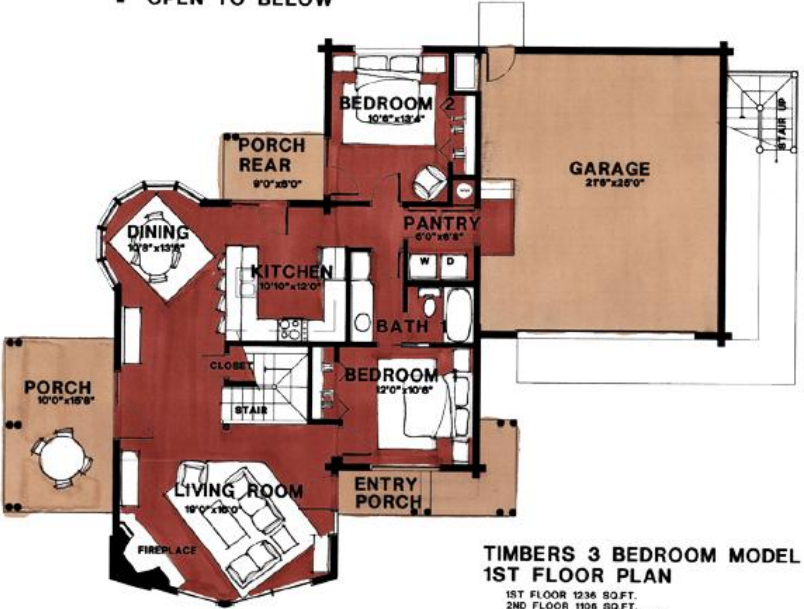
This feeling is further enhanced once you enter the Master Bedroom and discover the stone and copper see-through fireplace revealing the Master Bath and a Jacuzzi tub beyond. The rustic and the refined elegance are two contrasting elements that work well together.



Continuing on through the Master Bedroom to the private entry into the Studio.



This room features an efficient use of the space above the two car Garage and creates an excellent home office or guest quarters with its own bath, small kitchenette and exterior balcony entrance.



The Living Room, Dining Room and Kitchen layout allows for an open living style and still retains privacy between each room and its function.

Whether on vacation or not, once you experience this home you'll not want to leave.



Contemporary Log Homes - *Believe!*

The Timbers - 2,342 sq. ft.
Material Package Price: \$86,900.00

STANDARD MATERIAL PACKAGE INCLUDES:

SILL PLATE:	2x8 pressure treated or redwood plate.
FLOOR SYSTEM:	2x floor joists with 3/4" T&G OSB or plywood sheathing & girder beams.
PORCH FLOORS:	2x floor joists with 2x6 decking.
LOG WALLS:	7" dia. Swedish cope, lodge pole pine and douglas fir mix.
INTERIOR PARTITIONS:	2x4 or 2x6 studs @ 24" o.c.
STAIRS:	2x12 stringers and treads.
LOG GUARDRAILS:	2" dia. pickets @ 5" o.c. with 4" dia. rail on stairways & 2nd floor balconies
ROOF SYSTEM:	2x roof rafters with 1/2" OSB roof sheathing (or 5/8" OSB where required by code).
PORCH ROOF SYSTEM:	2x roof rafters with 1/2" OSB roof sheathing (or 5/8" OSB where required by code).
FASCIA:	2x S1S2E spruce or pine with 1x4 shingle molding.
ROOFING:	30 yr. Architectural fiberglass shingles over 15 lb. roofing felt.
BASIC BUILDING HARDWARE:	Joist hangers, hurricane ties, roof straps, log wall bolts & construction adhesive between each course of logs.
CONSTRUCTION MANUAL:	A simple step by step "how-to" guide.
BLUEPRINTS:	Five complete sets of permit ready plans prepared by registered architects.

LOG FINISH MATERIALS: "Sashco" products: Log Jam chinking for interior & exterior joints/seams. Capture exterior stain and Cascade exterior clear coat. Symphony (2 coats) interior clear coat finish.

TECHNICAL ASSISTANCE: A Contemporary Log Home representative will assist the construction crew at the construction site in starting log walls from the first floor.

FREIGHT: Included to the construction site if the materials are paid for prior to shipping in the AZ, CO, UT areas. Additional freight costs will apply for all other areas.

MANY POPULAR OPTIONS ARE AVAILABLE:

6x8 D-shaped logs	Pre-fitted Natural Hand Hewn Logs
8", 9", 10" & 12" diameter logs	Hand Peeled Machine Logs
Metal Roofing	Log Stairs
Window Packages	Door Packages
Heavy Timber Structures	Custom Design by Registered Architects

Thanks for taking the time to consider us as part of your dream. Call one of our representatives today or anytime. We don't have a clock when it comes to customer service!



Western Region
2023 East University Drive
Suite 2
Tempe, AZ 85281
(480) 894-1715

Eastern Region
1060 Old Plank Road
Waterford, PA 16441
(814)796-6883

Visit us on the web at www.clhllc.com
Email: deliverdreams@clhllc.com